

# State of Wyoming Corner Record

(In compliance with the *CORNER PERPETUATION AND FILING ACT*, Wyoming Statutes, 1997, Section 33-29-140 et. seq., and the Rules and Regulations of the Board of Registration for Professional Engineers and Professional Land Surveyors)

Reverse side of this form may be used if more space is needed.

Record of original survey and citation of source of historical information (if corner is lost or obliterated). Description of corner monumentation evidence found and/or monument and accessories established to perpetuate the location of this corner. Sketch of relative location of monument, accessories, and reference points with course and distance to adjacent corner(s) (if determined in this survey). Method and rationale for reestablishment of lost or obliterated corner.

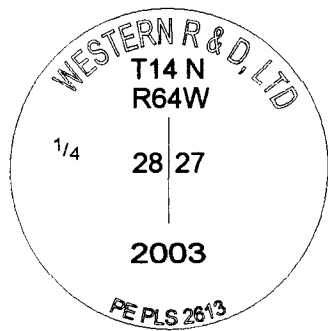
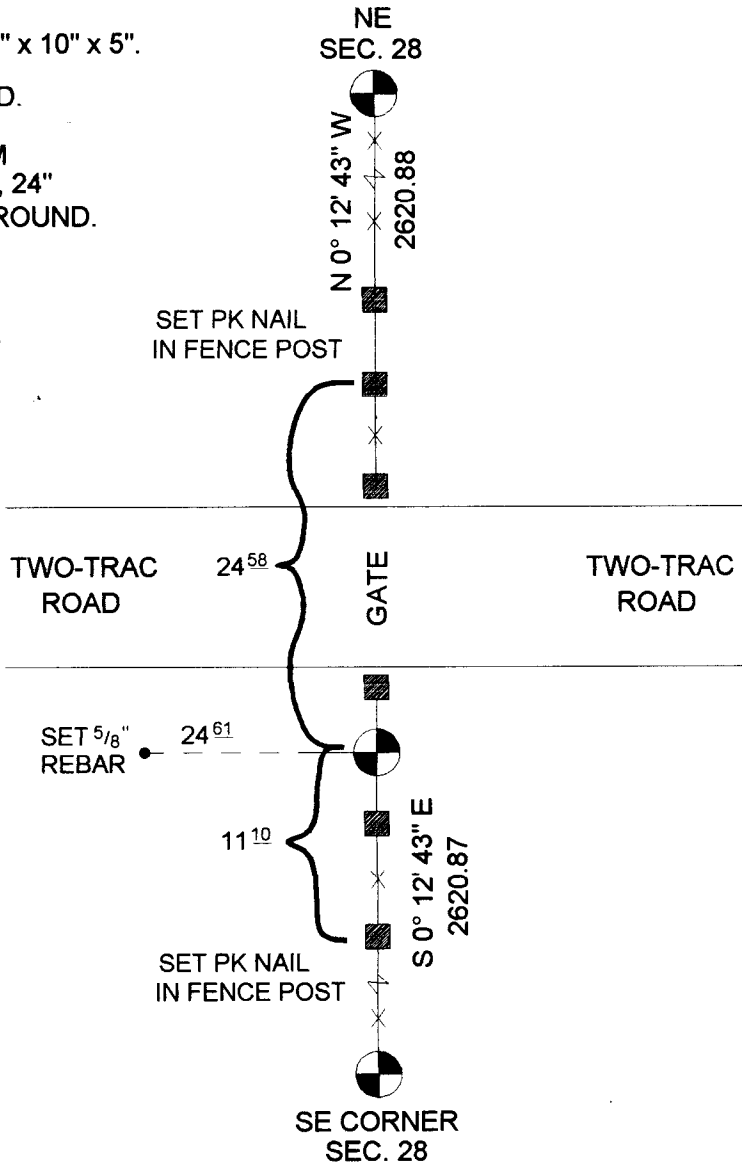
RECORD: SET RED SANDSTONE 16" x 10" x 5".

MONUMENT FOUND: NOTHING FOUND.

MONUMENT SET: SET 2 1/2" ALUMINUM CAP ON 5/8" REBAR, 24" LONG FLUSH W/ GROUND.

REFERENCES: SEE BELOW.

NOTE: CORNER WAS SET BY SINGLE PROPORTION.



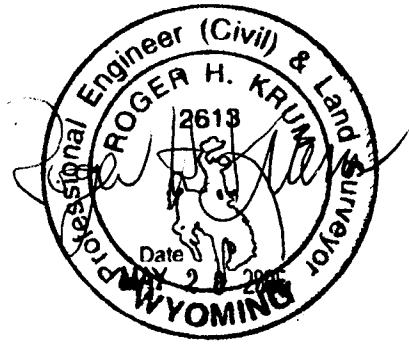
Date of Field Work: Sept 2003 Office Reference: T14NR64W-400240

### CROSS INDEX DIAGRAM

	1	2	3	4	5	6	7	8	9	10	11	12	13	14	15	16	17	18	19	20	21	22	23	24	25
A																									
B																									
C	6		5		4		3		2		1														
D																									
E																									
F																									
G	7		8		9		10		11		12														
H																									
J																									
K																									
L	18		17		16		15		14		13														
M																									
N																									
O																									
P	19		20		21		22		23		24														
Q																									
R																									
S																									
T	30		29		28		27		26		25														
U																									
V																									
W																									
X	31		32		33		34		35		36														
Y																									
Z																									

Firm/Agency, Address  
 Roger H. Krum, PE & PLS2613  
 Western R & D, Ltd.  
 5908 Yellowstone Rd Suite B  
 Cheyenne, Wyoming 82001  
 Telephone Number: 307 632 5656

This corner record was prepared by me or under my direction and supervision.  
 SEAL & SIGNATURE



Corner Name: EAST 1/4 CORNER

Section: 28 T14N R64W ; 6th P.M. Cross-Index No.: T-13